



bionet

SALT ELECTROLYSIS + CU/AG IONIZATION



NEW MODEL 2015 IP 54

from **3g** SALT/L

PORTABLE COLOR DISPLAY (TFT)

WORLDWIDE REMOTE CONTROL

WIFI and MODBUS

UPGRADE POSSIBLE

SELF CLEAN

SEA WATER

ELECTRONIC BOX



Complete pool control



Filtration pump control



Light control



Control of 4 additional machines



Temperature control



PH-management



redox-management



Free chlorine management



DESCRIPTION	BIO 16	BIO 22	BIO 33
Max. production Cl ₂ /h	16 g	22 g	33 g
Salt concentration	From 3 g to 100 gr Na/Cl		
m ³ Pool (to 28°C)	65 m ³	100 m ³	200 m ³
m ³ Pool (+28°C)	40 m ³	80 m ³	125 m ³
Display	2,8" TFT mobile (20m) color display (5 languages)		
Power supply	110 - 230 V 50/60 Hz		
Outlet	8-8 A	8-15 A	10-15 A
Maximum consumption	80 w	120 w	160 w
Dimensions	270 x 220 x 115 mm		
Electronic box	Fireproof plastic ABS black		
Front cover	Plastic ABS blue		
Electronic	Microprocessor 32 bit		
Intensity control	Ampere + Volt		
Ventilation	Natural convection		
Automatic cleaning	Programmable from 1 to 24 hours		
Flow switch	Gas sensor		
Hour counter	Yes - accessible by client		
Control production of disinfection	g/l		
Alarms	Insufficient salt / no flow / pH metering / pH max. metering time / communication error		
Production control by pool cover	Programmable 0-100% production of disinfection depending on pool cover open or closed		
Communication	MODBUS / WIFI		
110-230 V output control (3 outputs)	Acid pump / Relay AUX 1 / Relay AUX 2		
Potential-free output control (4 outputs)	Filtration / Lighting / Heating (AUX 4) / Relay AUX 3		

ELECTROLYSIS CELL



Self-cleaning



Life time guaranteed



Programmable polarity change



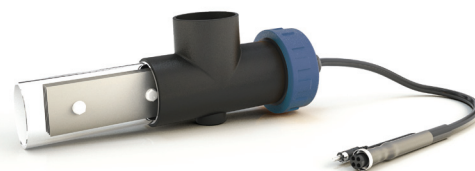
Transparent PVC holder



Security sensor



Cells for all pool sizes



DESCRIPTION	BIO 16	BIO 22	BIO 33
Electrolysis cell	4 Titanium cell plates MONOPOLAR	5 Titanium cell plates MONOPOLAR	7 Titanium cell plates BIPOLAR
Minimum flow	3 m ³ /h	5 m ³ /h	7 m ³ /h
Dimension cell plates	200 x 45 mm		
Material cell housing	PVC plastic transparent		
Cell fastener	Thread for an easy installation		
Diameter tube connection	63 mm		
Dimension cell	355 x 305 x 305 mm		
Cell cable size	(3 x 4) x 1,5 m		
Gas sensor	Incorporated in the cell		
Maximum pressure	4 Kg/cm ²		
Temperature	Low 0° C / 45° C Maximum		

IONISATION CHAMBER



Self-cleaning



Programmable polarity change



Ionisation timer



DESCRIPTION	BIO 16	BIO 22	BIO 33	BIO 50
Number of electrodes	2	4	6	8
Dimensions (length/Ø) mm	See image (dimensions)			
Connection	Thread 2" (63 mm)			
Material of housing	ABS transparent			
Material of electrodes	Copper and silver			

AUTOMATIC CONTROLS



DESCRIPTION	pH	Redox	Free chlorine	Conductivity	Temperature
REFERENCE	B	E	H	I	T
Type of probe	Double junction	Ceramic junction	Amperometric (Au-Cu)	Epoxi	Thermometer
Measuring range	0-12 pH	0-1000 mV	0-10 ppm	0-20,000 MS	0-100° C
Measuring precision	0,1 pH	1-3 mV	0,10 ppm	10 MS / 100 MS	1° C
Material	Ag/AgCl gel	Gold disc	Copper / gold		Stainless steel
Probe holder	ABS 50/63 mm		Transparent methacrylate	ABS 50/63 mm	
Supplementary equipment			Includes 2 m of flexible tube/valve		
Cable	2 m coax		2 m		
Plug	BNC with protection	BNC with protection	Inductive sensor connectors / BNC	Connectors	Connectors

DIMENSIONS

